

KOMATSU

PC290LC-11/PC360LC-11/PC490LC-11



Demolition specification excavators

Engine power

196-359 HP (147-268 kW)

Operating weight

67,120-107,497 lbs. (30,445-48,760 kg)

Maximum attachment weight

7,606-11,795 lbs. (3,450-5,350 kg)

Walk-around



Quick specs

- Engine power: 196-359 HP (147-268 kW)
- Operating weight: 67,120-107,497 lbs. (30,445-48,760 kg)
- Maximum attachment weight: 7,606-11,795 lbs. (3,450-5,350 kg)

Exceptional demolition performance

Work equipment

- Excavator boom options (PC290-PC490)
- Straight boom options (PC290-PC490)
- Factory installed high-pressure and medium-pressure auxiliary hydraulic circuits with additional attachment drain line

Operator environment

- Pressurized and quiet cab
- Joysticks with proportional attachment control
- Programmable flow and pressure control with 15-tool memory
- Fully air suspended operator console with heated, high-back seat

Safety equipment

- ISO 10262 Level 2 certified FOPS with hinged front guard
- EN356 P5A high-impact protection front and roof window glass with roof window wash/wipe system
- KomVision surround view system
- Neutral position detection system

Heavy-duty protection

- Heavy-duty 3/8" (9 mm) revolving frame under guards
- Heavy-duty 5/8" (15 mm) revolving frame bolted side guards
- Attachment/bucket cylinder guard
- Reinforced attachment/bucket linkage
- Boom light protection guard



Be flexible and efficient with Komatsu demolition excavators

The demolition phase of your project is an essential first step in transforming the space for new construction. When you need an adaptable, efficient and durable excavator to help expedite your demolition processes, choose Komatsu's family of demolition excavators to help lead the way.

Built to withstand the stresses of demanding work environments, these excavators feature reinforced structures, protective guards and heavy-duty undercovers so that you can tackle tough tasks with confidence. Staying adaptable as you encounter a variety of materials and scenarios on a demolition job is crucial, which is

why these excavators have an optional pressure and flow control system that can accommodate up to 15 settings to help optimize performance with each attachment. Add in a number of features that promote safety and visibility with a cab that's comfortable and convenient, and you have a winning combination your operators will appreciate.

When the foundation of your project relies on the quality of your demolition processes, get an excavator that's flexible to suit your needs and helps streamline preparation for your site.



Demolition excavators



Extra heavy-duty, wraparound-type side protection (5/8"; 15 mm) bolted to each side of the upper structure to help secure your vehicle from debris or side impact.



Minimize wear and tear with heavy-duty undercovers (3/8"; 9 mm) that fully enclose the upper structure's underside against debris on the ground.



Stay resilient against the stresses of demanding environments with an attachment/bucket cylinder guard, reinforced bucket linkage and a heavy-duty boom lamp.



Prioritize safety with a cab that is ROPS compliant with ISO 12117-2:2008. Easy access for window cleaning with the hinged front guard.



The one-piece front screen is fitted with high-impact protective glass to help shield debris and features a carefully aligned grid layout to minimize obstruction.



The front and roof windows are high-impact protective glass compliant with EN356 grade P5A. A wash/wipe system keeps the roof window clean for optimal visibility.



Get smooth, precise movement of your attachments with a joystick that features proportional control buttons for enhanced performance.



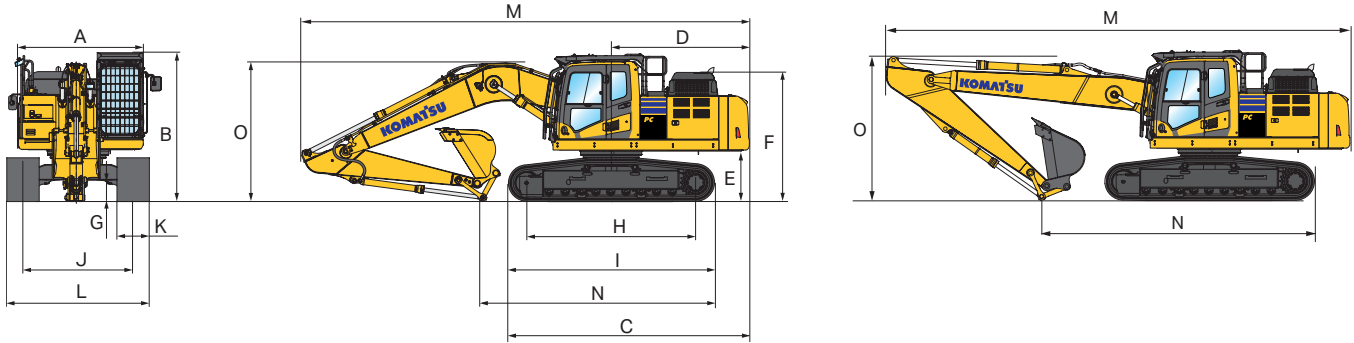
The standard pressure and flow control system can accommodate up to 15 settings to help flexibility and optimize performance with each attachment.



KomVision enhances the visibility of the safety zone around the machine so your operators can work efficiently and confidently, even in low-light conditions.

Demolition excavators

PC290LC-11



Machine dimensions

| | Excavator boom | Straight boom |
|--|-------------------|-------------------|
| | PC290LC-11 | PC290LC-11 |
| A Overall width of upper structure | 9' (2,750 mm) | 9' (2,750 mm) |
| Overall width of upper structure (excluding side guards) | 8'11" (2,705 mm) | 8'11" (2,705 mm) |
| B Overall height of cab | 11'2" (3,390 mm) | 11'2" (3,390 mm) |
| Overall height of cab (excluding OPG) | 10'6" (3,180 mm) | 10'6" (3,180 mm) |
| C Overall length of basic machine | 17'11" (5,465 mm) | 17'11" (5,465 mm) |
| D Tail length | 9'10" (2,985 mm) | 9'10" (2,985 mm) |
| Tail swing radius | 9'11" (3,020 mm) | 9'11" (3,020 mm) |
| E Clearance under counterweight | 4' (1,215 mm) | 4' (1,215 mm) |
| F Machine tail height (top of engine cover) | 9'6" (2,895 mm) | 9'6" (2,895 mm) |
| G Ground clearance | 1'8" (495 mm) | 1'8" (495 mm) |
| H Track length on ground | 13'3" (4,030 mm) | 13'3" (4,030 mm) |
| I Track length | 16'3" (4,955 mm) | 16'3" (4,955 mm) |
| J Track gauge | 8'6" (2,590 mm) | 7'10" (2,390 mm) |
| K Track shoe width | 28" (700 mm) | 28" (700 mm) |
| L Overall track width with 28" (700 mm) shoe | 10'10" (3,290 mm) | 10'2" (3,090 mm) |

Transport dimensions

| | Excavator boom | Straight boom |
|--|-------------------|-------------------|
| Arm length | 10'6" (3.2 m) | 10'6" (3.2 m) |
| M Transport length | 33'8" (10,265 mm) | 33'9" (10,580 mm) |
| N Length on ground (transport) PC290LC-11E0 | 18'6" (5,625 mm) | 21'6" (6,550 mm) |
| O Overall height (to top of boom) | 11' (3,340 mm) | 9'11" (3,025 mm) |

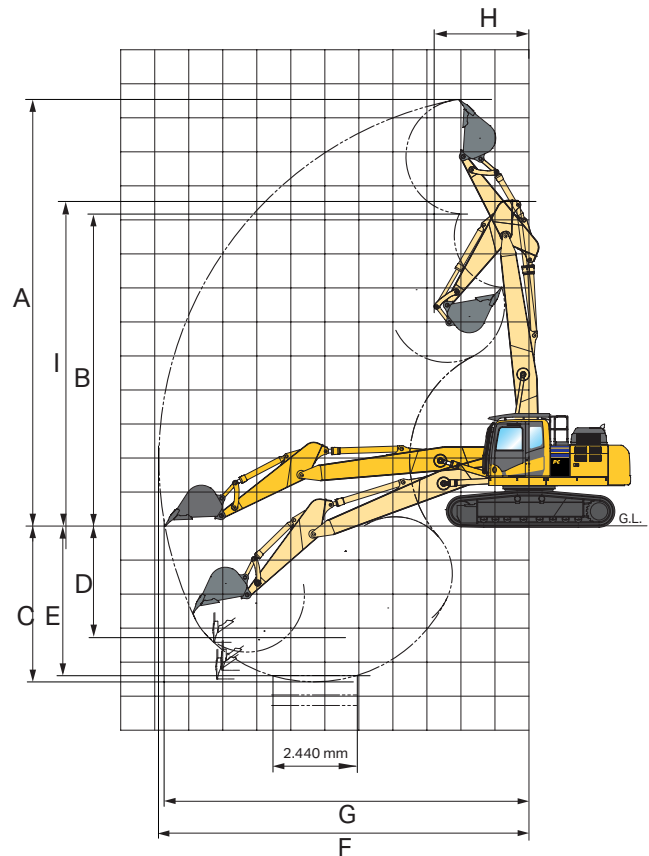
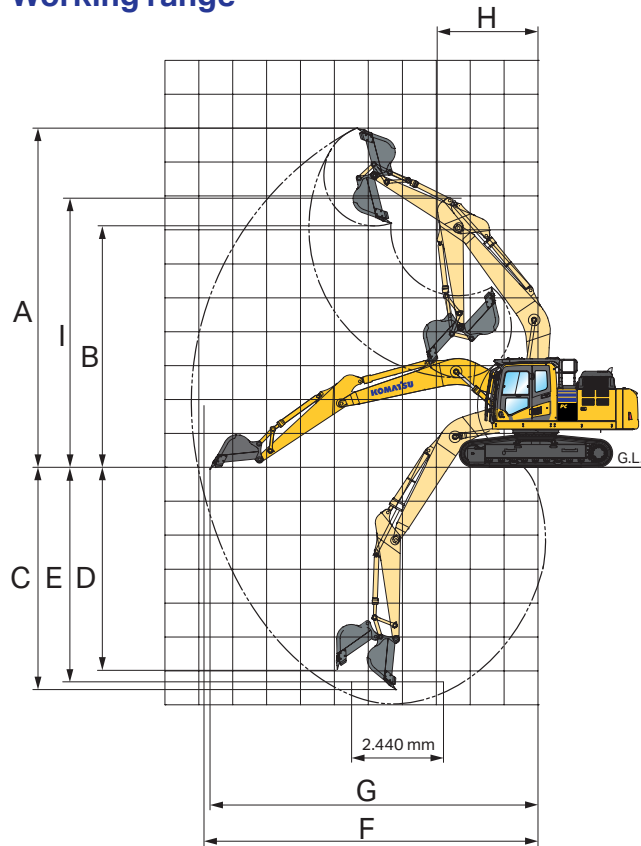
Operating weight (appr.)

| PC290LC-11 | Excavator boom | | Straight boom | |
|----------------------|-------------------------|-------------------------------------|-------------------------|-------------------------------------|
| Triple grouser shoes | Operating weight | Ground pressure | Operating weight | Ground pressure |
| 28" (700 mm) | 66,789 lbs. (30,295 kg) | 7.11 psi (0.50 kg/cm ²) | 67,120 lbs. (30,445 kg) | 7.15 psi (0.50 kg/cm ²) |

Operating weight, including specified work equipment, 10'6" (3.2 m) arm, no bucket or attachment installed, operator, lubricant, coolant, full fuel tank.

Excavator boom/straight boom demolition

Working range

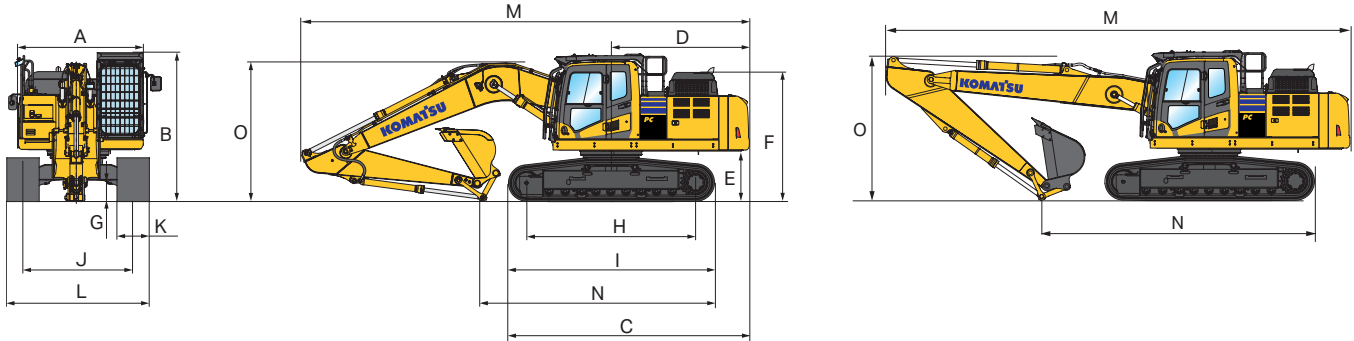


| PC290LC-11 | Excavator boom | Straight boom |
|---|-------------------|-----------------------|
| Boom length | 20'3" (6.2 m) | 21'8" (6.6 m) |
| Arm length | 10'6" (3.2 m) | 10'6" (3.2 m) |
| A Max. digging height | 34' (10,345 mm) | 42'8" (13,000 mm) |
| B Max. dumping height | 24'3" (7,370 mm) | 31'11" (9,725 mm) |
| C Max. digging depth | 22'9" (6,915 mm) | 16'10" (5,130 mm) |
| D Max. vertical wall digging depth | 20'2" (6,135 mm) | 13'11" (4,240 mm) |
| E Max. digging depth of cut for 8' (2.44 m) level bottom | 22'2" (6,755 mm) | 16'4" (4,965 mm) |
| F Max. digging reach | 34' (10,365 mm) | 37'6" (11,430 mm) |
| G Max. digging reach at ground level | 34'4" (10,455 mm) | 37" (11,260 mm) |
| H Min. swing radius | 12'1" (3,680 mm) | 9'1" (2,770 mm) |
| I Max. height at min. swing radius | 27'8" (8,420 mm) | 31'4" (9,550 mm) |
| Maximum weight at arm end (LC)* | | 7,606 lbs. (3,450 kg) |

* Attachment manufacturer is responsible for recommending suitable attachment based on published machine performance data.

Demolition excavators

PC360LC-11



Machine dimensions

| | Excavator boom | Straight boom |
|--|-------------------|-------------------|
| | PC360LC-11 | PC360LC-11 |
| A Overall width of upper structure | 10' (3,050 mm) | 10' (3,050 mm) |
| Overall width of upper structure (excluding side guards) | 9'10" (2,995 mm) | 9'10" (2,995 mm) |
| B Overall height of cab | 11'1" (3,370 mm) | 11'1" (3,370 mm) |
| Overall height of cab (excluding OPG) | 10'5" (3,160 mm) | 10'5" (3,160 mm) |
| C Overall length of basic machine | 19'4" (5,885 mm) | 19'4" (5,885 mm) |
| D Tail length | 11'2" (3,405 mm) | 11'2" (3,405 mm) |
| Tail swing radius | 11'4" (3,445 mm) | 11'4" (3,445 mm) |
| E Clearance under counterweight | 3'11" (1,185 mm) | 3'11" (1,185 mm) |
| F Machine tail height (top of engine cover) | 9'7" (2,920 mm) | 9'7" (2,920 mm) |
| G Ground clearance | 1'8" (500 mm) | 1'8" (500 mm) |
| H Track length on ground | 13'3" (4,030 mm) | 13'3" (4,030 mm) |
| I Track length | 16'3" (4,955 mm) | 16'3" (4,955 mm) |
| J Track gauge | 8'6" (2,590 mm) | 8'6" (2,590 mm) |
| K Track shoe width | 28" (700 mm) | 28" (700 mm) |
| L Overall track width with 28" (700 mm) shoe | 10'10" (3,290 mm) | 10'10" (3,290 mm) |

Transport dimensions

| | Excavator boom | Straight boom |
|--|-------------------|-------------------|
| Arm length | 10'6" (3.2 m) | 10'6" (3.2 m) |
| M Transport length | 36'8" (11,145 mm) | 37'2" (11,320 mm) |
| N Length on ground (transport) PC360LC-11 | 16'6" (5,935 mm) | 23'2" (7,045 mm) |
| O Overall height (to top of boom) | 12' (3,340 mm) | 10'2" (3,095 mm) |

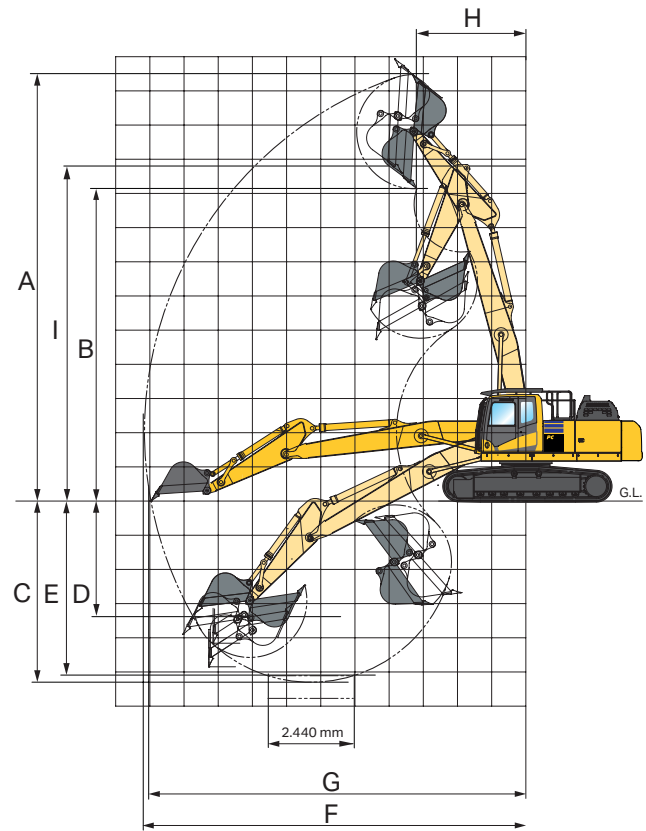
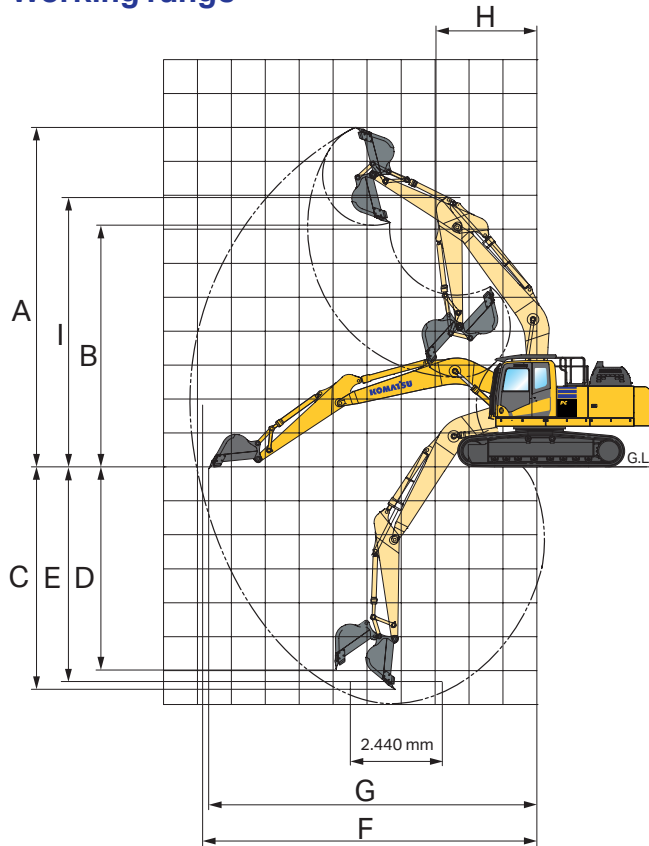
Operating weight (appr.)

| PC360LC-11 | Excavator boom | | Straight boom | |
|----------------------|-------------------------|-------------------------------------|-------------------------|-------------------------------------|
| Triple grouser shoes | Operating weight | Ground pressure | Operating weight | Ground pressure |
| 28" (700 mm) | 78,418 lbs. (35,570 kg) | 8.25 psi (0.58 kg/cm ²) | 78,551 lbs. (35,630 kg) | 8.25 psi (0.58 kg/cm ²) |

Operating weight, including specified work equipment, 10'6" (3.2 m) arm, no bucket or attachment installed, operator, lubricant, coolant, full fuel tank.

Excavator boom/straight boom demolition

Working range

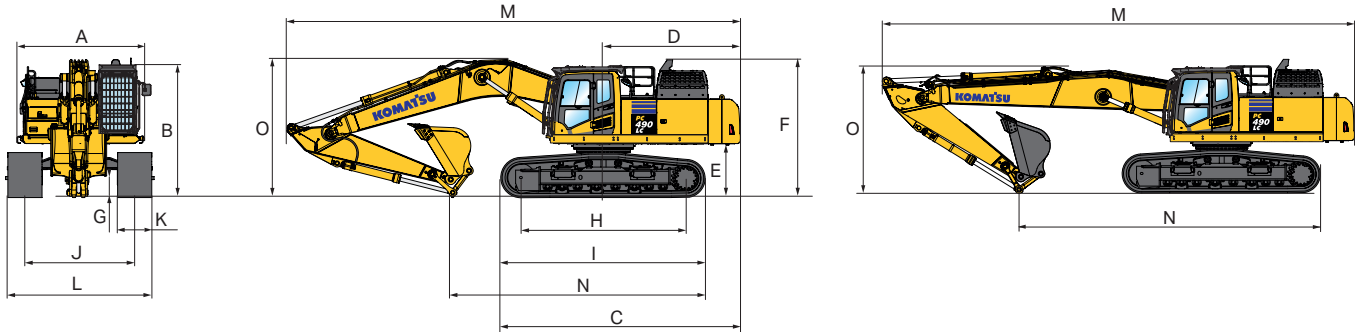


| PC360LC-11 | Excavator boom | Straight boom |
|---|--------------------|-----------------------|
| Boom length | 21'3" (6.5 m) | 22'7" (6.9 m) |
| Arm length | 10'6" (3.2 m) | 10'6" (3.2 m) |
| A Max. digging height | 33'6" (10,210 mm) | 42'5" (12,930 mm) |
| B Max. dumping height | 23'4" (7,110 mm) | 31'6" (9,600 mm) |
| C Max. digging depth | 24'3" (7,380 mm) | 19'6" (5,940 mm) |
| D Max. vertical wall digging depth | 21'4" (6,480 mm) | 15'11" (4,850 mm) |
| E Max. digging depth of cut for 8' (2.44 m) level bottom | 23'7" (7,180 mm) | 19' (5,770 mm) |
| F Max. digging reach | 36'5" (11,100 mm) | 38'7" (11,740 mm) |
| G Max. digging reach at ground level | 35'10" (10,920 mm) | 38" (11,560 mm) |
| H Min. swing radius | 14'2" (4,310 mm) | 11'8" (3,550 mm) |
| I Max. height at min. swing radius | 28' (8,520 mm) | 32'3" (9,825 mm) |
| Maximum weight at arm end (LC)* | | 8,929 lbs. (4,050 kg) |

* Attachment manufacturer is responsible for recommending suitable attachment based on published machine performance data.

Demolition excavators

PC490LC-11



Machine dimensions

| | Excavator boom | Straight boom |
|--|-----------------------------------|-----------------------------------|
| | PC490LC-11 | PC490LC-11 |
| A Overall width of upper structure | 10'1" (3,060 mm) | 10'1" (3,060 mm) |
| Overall width of upper structure (excluding side guards) | 9'10" (2,995 mm) | 9'10" (2,995 mm) |
| B Overall height of cab | 11'9" (3,570 mm) | 11'9" (3,570 mm) |
| Overall height of cab (excluding OPG) | 11'1" (3,360 mm) | 11'1" (3,360 mm) |
| C Overall length of basic machine | 20'8" (6,300 mm) | 20'8" (6,300 mm) |
| D Tail length | 11'10" (3,605 mm) | 11'10" (3,605 mm) |
| Tail swing radius | 12' (3,645 mm) | 12' (3,645 mm) |
| E Clearance under counterweight | 4'7" (1,385 mm) | 4'7" (1,385 mm) |
| F Machine tail height (top of engine cover) | 11'11" (3,630 mm) | 11'11" (3,630 mm) |
| G Ground clearance | 2'4" (700 mm) | 2'4" (700 mm) |
| H Track length ground | 14'4" (4,350 mm) | 14'4" (4,350 mm) |
| I Track length | 17'8" (5,385 mm) | 17'8" (5,385 mm) |
| J Track gauge (working) | 9'6" (2,890 mm) | 9'6" (2,890 mm) |
| K Track shoe width | 28" (700 mm) | 28" (700 mm) |
| L Overall track width with 28" (700 mm) shoes | 10'2" - 11'10" (3,090 - 3,590 mm) | 10'2" - 11'10" (3,090 - 3,590 mm) |

Transport dimensions

| | Excavator boom | Straight boom |
|--|-------------------|-------------------|
| Arm length | 11'2" (3.4 m) | 11'2" (3.4 m) |
| M Transport length | 39'2" (11,930 mm) | 42'1" (12,808 mm) |
| N Length on ground (transport) PC490LC-11E0 | 22'7" (6,875 mm) | 27'3" (8,314 mm) |
| O Overall height (to top of boom) | 12' (3,635 mm) | 11'3" (3,421 mm) |

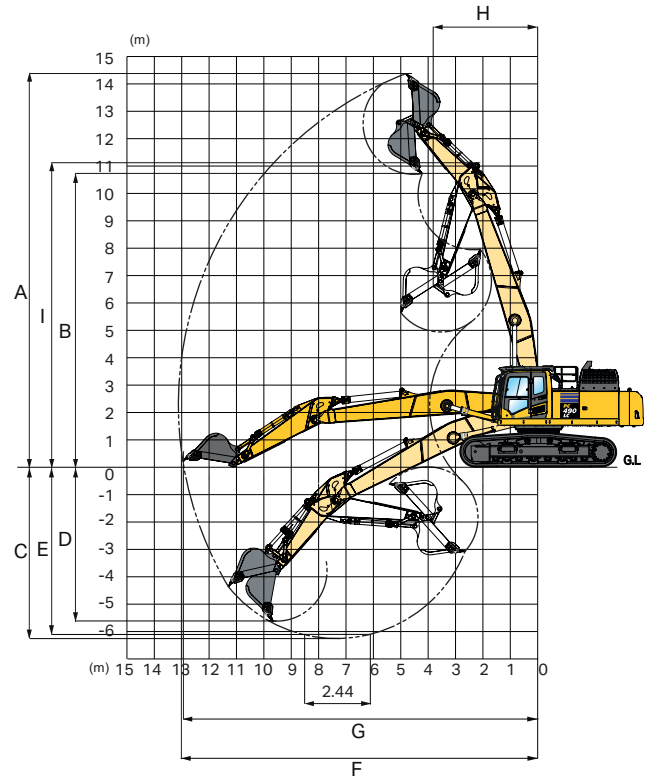
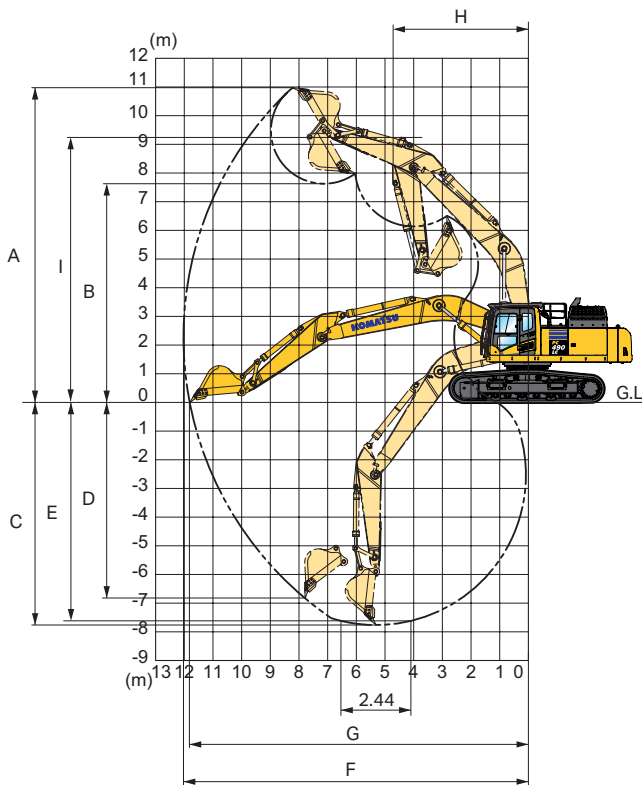
Operating weight (appr.)

| PC490LC-11 | Excavator boom | | Straight boom | |
|--------------------------------------|--------------------------|--------------------------------------|--------------------------|--------------------------------------|
| | Operating weight | Ground pressure | Operating weight | Ground pressure |
| Triple grouser shoes 28" (700 mm) | 107,354 lbs. (48,695 kg) | 10.38 psi (0.73 kg/cm ²) | 107,497 lbs. (48,760 kg) | 10.38 psi (0.73 kg/cm ²) |

Operating weight, including specified work equipment, 11'2" (3.4 m) arm, no bucket or attachment installed, operator, lubricant, coolant, full fuel tank.

Excavator boom/straight boom demolition

Working range



| PC490LC-11 | Excavator boom | Straight boom |
|---|-------------------|------------------------|
| Boom length | 21'3" (6.5 m) | 26'3" (8.0 m) |
| Arm length | 11'2" (3.4 m) | 11'2" (3.4 m) |
| A Max. digging height | 36'1" (10,980 mm) | 47'3" (14,380 mm) |
| B Max. dumping height | 25'1" (7,630 mm) | 35'2" (10,700 mm) |
| C Max. digging depth | 25'6" (7,755 mm) | 20'7" (6,255 mm) |
| D Max. vertical wall digging depth | 22'4" (6,805 mm) | 14'4" (4,360 mm) |
| E Max. digging depth of cut for 8' (2.44 m) level bottom | 25' (7,615 mm) | 20'1" (6,105 mm) |
| F Max. digging reach | 39'6" (12,030 mm) | 43'1" (13,120 mm) |
| G Max. digging reach at ground level | 38'9" (11,810 mm) | 42'7" (12,960 mm) |
| H Min. swing radius | 15'7" (4,735 mm) | 12'2" (3,700 mm) |
| I Max. height at min. swing radius | 32'3" (9,824 mm) | 36'6" (11,112 mm) |
| Maximum weight at arm end (LC)* | | 11,795 lbs. (5,350 kg) |

* Attachment manufacturer is responsible for recommending suitable attachment based on published machine performance data.

Standard and optional equipment

Engine

| | |
|---|---|
| Komatsu turbocharged common rail direct injection diesel engine | ⊗ |
| EU Stage V compliant | ⊗ |
| Suction type cooling fan with radiator fly screen (PC490 fitted with reversible type fan) | ⊗ |
| Automatic engine warm-up system | ⊗ |
| Engine overheat prevention system | ⊗ |
| Fuel control dial | ⊗ |
| Auto-deceleration function | ⊗ |
| Adjustable idle shutdown | ⊗ |
| Engine key stop | ⊗ |
| Engine ignition can be password secured on request | ⊗ |
| Diesel fuel, conforming to EN590 Class 2/Grade D. Paraffinic fuel capability (HVO, GTL, BTL), conforming to EN 15940:2016 | ⊗ |

Service and maintenance

| | |
|--|---|
| Automatic fuel line deaeration | ⊗ |
| Double element type air cleaner with dust indicator and auto dust evacuator | ⊗ |
| Komtrax – Komatsu wireless monitoring system (4G) | ⊗ |
| Komatsu Care – A maintenance program for Komatsu customers | ⊗ |
| Multifunction video compatible colour monitor with Equipment Management and Monitoring System (EMMS) and efficiency guidance | ⊗ |
| Toolkit | ⊗ |
| Service points | ⊗ |

Undercarriage

| | |
|--------------------------|---|
| Track roller guards | ⊗ |
| Track frame under guards | ⊗ |
| Triple grouser shoes | ⊗ |

Drives and brakes

| | |
|---|---|
| Hydrostatic, 3-speed travel system with automatic shift and planetary gear type final drives, and hydraulic travel and parking brakes | ⊗ |
| PPC control levers and pedals for steering and travel | ⊗ |

LED lighting system

| | |
|---|---|
| LED lights: 2 Revolving frame, 4 cab roof (front), 1 cab roof (rear), 2 boom (L/R) with heavy duty protective guards, 1 counterweight, 2 boom cylinders, 2 revolving frame (L/R), amber rotating beacon | ⊗ |
|---|---|

Work equipment

| | |
|-------------------------------|---|
| Reinforced bucket linkage | ⊗ |
| Excavator boom | ⊙ |
| Straight boom (PC290/360/490) | ⊙ |
| Bucket cylinder guard | ⊙ |
| Komatsu breakers | ⊙ |

⊗ standard equipment ⊙ optional equipment

Cab

| | |
|--|---|
| Demolition specification Safety SpaceCab, with Komatsu high visibility ISO 10262 level 2 FOPS guards. Fixed, one piece front window. Front and roof window fitted with high impact protective laminated glass, compliant with EN356 Grade P5A. | ⊗ |
| Heated, high-back air-suspended seat with lumbar support, console mounted height adjustable arm rests, and retractable seat belt | ⊗ |
| Automatic climate control system | ⊗ |
| 12/24-volt power supplies | ⊗ |
| Beverage holder and magazine rack | ⊗ |
| Hot and cool box | ⊗ |
| Radio (AM/FM) | ⊗ |
| Auxiliary input (MP3 jack) | ⊗ |
| Roof window wiper/wash system | ⊗ |

Hydraulic system

| | |
|---|---|
| Electronic closed-center load sensing (E-CLSS) hydraulic system (HydraMind) | ⊗ |
| Pump and engine mutual control (PEMC) system | ⊗ |
| 6-working mode selection system; power mode, economy mode, breaker mode, attachment power and attachment economy mode, and lifting mode | ⊗ |
| PowerMax function | ⊗ |
| PPC wrist control levers for arm, boom, bucket and swing, with proportional control handles for attachments and 3 auxiliary buttons | ⊗ |
| Prepared for hydraulic quick-coupler | ⊗ |
| High-pressure and medium-pressure auxiliary hydraulic circuits | ⊗ |
| Attachment drain line | ⊗ |
| Komatsu Integrated Attachment Control (KIAC) (PC290, 360, 490) | ⊗ |

Other equipment

| | |
|---|---|
| KomVision surround view system | ⊗ |
| Electric horn | ⊗ |
| Overload warning device | ⊗ |
| Audible travel alarm | ⊗ |
| Boom cylinder load hold valves | ⊗ |
| Arm cylinder load hold valve | ⊗ |
| Large handrails, rearview mirrors | ⊗ |
| Battery master disconnect switch | ⊗ |
| ROPS compliant to ISO 12117-2:2008 | ⊗ |
| Emergency engine stop switch | ⊗ |
| Seat belt caution indicator | ⊗ |
| Neutral position detection system | ⊗ |
| OPG Level II front guard (FOPS), hinged type | ⊗ |
| OPG Level II top guard (FOPS) | ⊗ |
| Standard counterweight | ⊗ |
| Remote greasing for swing circle and pins | ⊗ |
| 24V electric refueling pump with automatic shut-off valve | ⊗ |
| Heavy-duty side impact protection | ⊗ |
| Heavy-duty protection underside of upperstructure | ⊗ |

Product designs, specifications and/or data in this document are provided for information purposes only and are not warranties of any kind. Product designs and/or specifications may be changed at any time without notice. The only warranties that apply to sales of products and services are Komatsu's standard written warranties, which will be furnished upon request.

Komatsu and other trademarks and service marks used herein are the property of Komatsu Ltd. or its subsidiaries, or the respective owners or licensees.

KOMATSU

komatsu.com

